

SAW16-F



FULL SAW ATTACHMENT SAW16 - F

The complete 16" trenching solution - purpose-built and turn-key ready.

SAW16-F is our full microtrenching saw attachment. It is designed to be adaptable to a wide range of tractors (e.g. Ditch Witch RT80, Vermeer RTX550, RTX750, RTX1250).

FEATURES

- Complete attachment – includes mounting frame, hydraulic drive, actuator systems
- Universal compatibility (via adapters) - you can mount on virtually any tractor platforms
- 16" depth (with adjustable depth control)
- Built for microtrenching: narrow cuts, tight tolerances, clean spoild handling
- Heavy-duty materials and construction (machined interfaces, robust welds)
- Proven in field with existing installations

BENEFITS

- Turnkey solution - you get everything needed to make your tractor a microtrenching machine at a low cost.
- Flexible deployment across your fleet (with adapter kits)
- Optimized for trenching depth, speed, and durability
- Ideal for customers wanting a "plug-and-go" high performance setup



SPECIFICATIONS

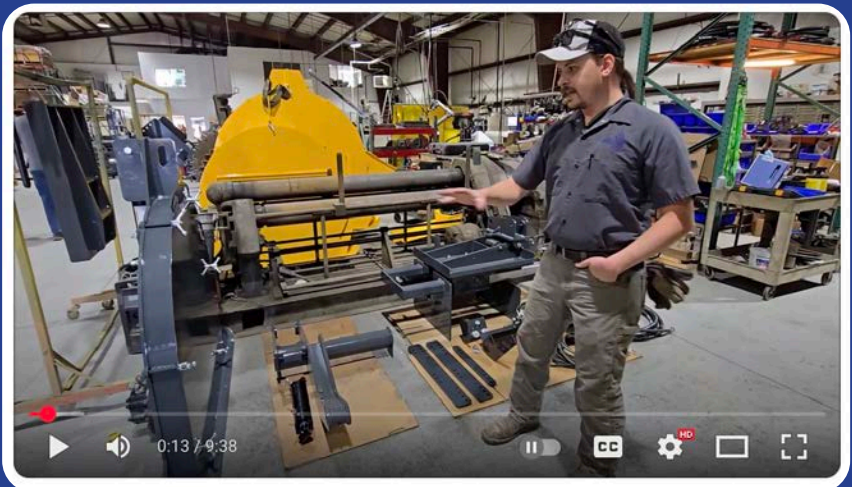
U.S.

METRIC

Trench depth	0-16"	0-533.4 mm
Blade diameter		
Attachment height, transport	67"	1701.8 mm
Length, transport		
10ft total tractor plus saw	120" saw/traverse	3048 mm saw/traverse
Trench width	.5-2.5"	12.7-63.5 mm
Width, transport	68.6"	1742.44 mm
Attachment weight	1600 lb	725.75 kg



Watch an install
in action on our
Youtube channel



microtrench-blades.com • info@go-mtc.com • 801-250-9503