



# 2026

## PRODUCT CATALOG





## WELCOME TO THE MCCOWN TECHNOLOGY CORPORATION CATALOG

At McCown Technology Corporation (MTC), we engineer blades that cut faster, last longer, and lower your costs. With five generations of metal fabrication expertise, we've built a reputation for precision, durability, and innovation in microtrenching.

Inside this catalog, you'll find our full line of blades, equipment, and accessories — all designed to help you trench cleaner, safer, and more efficiently. Whatever the job conditions, MTC delivers the performance you can trust.

### CONTENTS

<b>Saw Blades</b> .....	<b>4</b>
<b>STV-300 Grout Machine</b> .....	<b>6</b>
<b>Zahn®* 1CM Compatible Replacement Mixers</b> .....	<b>9</b>
<b>CD100</b> .....	<b>10</b>
<b>Tractor Package</b> .....	<b>12</b>
<b>Saw comparisons</b> .....	<b>14</b>
<b>SAW16-F</b> .....	<b>16</b>
<b>SAW16-D</b> .....	<b>18</b>
<b>SAW16-V</b> .....	<b>20</b>
<b>SAW16-SC</b> .....	<b>22</b>
<b>SAW16-SS</b> .....	<b>23</b>
<b>SAW16-SD</b> .....	<b>24</b>
<b>SAW21-F</b> .....	<b>26</b>
<b>SAW26-F</b> .....	<b>28</b>
<b>Vacuum Transition System</b> .....	<b>30</b>
<b>Teeth</b> .....	<b>32</b>
<b>Hub Adapter</b> .....	<b>32</b>
<b>Core Bits</b> .....	<b>33</b>

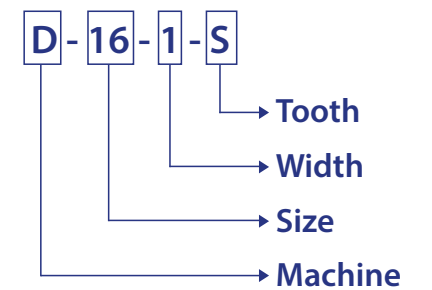
# SAW BLADES



## WHAT WE'RE KNOWN FOR

We offer over a dozen options, including two types of unique teeth for different cutting conditions. Custom blades are our specialty- if your machine type isn't listed, we can still create a blade for you at no extra cost. Using AR (Abrasion Resistant) Plate, our blades cut faster and cleaner than others on the market and last longer as well.

## PART NUMBER GUIDE



### MACHINE

MTC	D	.5"	.5
Ditch Witch® *	D	.75"	.75
Vermeer	V	1"	1
Tesmec	T	1.5"	1.5
Cat	C	2"	2
Rivard	R	2.5"	2.5

### WIDTH OF CUT

3"	3
3.25"	3.25

### SIZE/DEPTH OF CUT

12"	12
16"	16
18"	18
21"	21
26"	26
Clean Fast	CF
City Clean Fast	CCF
Side Cut	SC

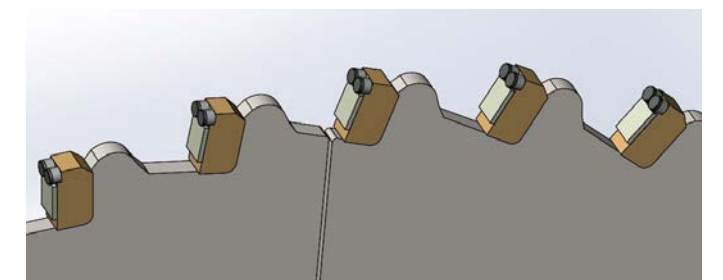
Blade widths are nominal. Actual trench width is typically 20% wider.

Contact us for custom widths.

### TYPE OF TOOTH

Speed	S
Enduro	E

Teeth can be sold separately



"Fastest cutting blades in the known universe"™

# STV-300 GROUT MACHINE



## THE ULTIMATE IN OPERATOR COMFORT

- Sit comfortably, no need to stand.
- An umbrella to keep you cool and shaded.
- Cruise Control for effortless operation.
- Chute Side Shift to keep you perfectly aligned with the trench.



## THE ULTIMATE IN REPAIR AND MAINTENANCE

- A thick tub built to last, resistant to wear and tear and comes with a Lifetime Guarantee!
- Easy access to all parts and components for quick maintenance.
- Significantly lower repair part costs.
- One year Warranty.



For new users transitioning from stand-up machines, it might take a few days to a week to fully adjust. Once you're familiar with rear steering (think forklift or motorboat) and the chute side shift, you'll find it much faster and easier to operate. Plus, the comfort factor is unmatched.

## VIEW OF THE TRENCH

Our innovative offset design allows the operator excellent visibility of the chute and trench.

The horizontal side shift control allows the chute to be adjusted left and right without changing the direction of travel or steering.



# SPECIFICATIONS

DIMENSIONS	U.S.	METRIC	POWER	U.S.	METRIC
Mobile length	82.8 in	2.1 m	Engine	Kohler® CH730	
Wheelbase	44.6 in	1130 mm	Fuel	Gasoline	
Attachment mounting to front axle	11.2 in	284 mm	Cooling medium	Air	
Machine height	57 in	1.45 m	Number of cylinders	2	
Ground clearance	5.375	137 mm	Displacement	44 in <sup>3</sup>	725 cm <sup>3</sup>
Width	51.6 in	1.11 m	Bore	3.27 in	83 mm
Weight (Combined)	1,900 lb	727 kg	Stroke	2.64 in	67 mm
Vehicle clearance circle (SAE) wall to wall			Manufacturer's power rating	23.5 hp	17.5 kW
Right turn	11.3 ft	3.44 m	Rated speed	3,600 rpm	

## OPERATION

Ground drive speed, forward/reverse	9 Mph	14 kmh
-------------------------------------	-------	--------

## HYDRAULIC SYSTEM

Auxiliary: gear pump		
Flow rate	6.23 gpm	23.4 l/min
Pressure	3,625 psi	250 bar
Ground drive: hydrostatic transmission		
Pressure	3,045 psi	210 bar
Oil	ISO 46	

## TIRES/PRESSURE

Urethane filled 20 x 10-8, ply, bar lug	N/A	
Tire assembly mass	49 lb	22.23 kg

## GM1 GROUT MIXER SPECIFICATIONS

Capacity Dry	13 cu/ft (1/2 CY)
Capacity, Liquid	100 gal
Payload Mass	1800 lb
Empty Weight	812 lb

## FLUID CAPACITIES

Fuel tank	8.3 gal	31.4 L
Engine oil, w/filter	2 qt	1.9 L
Hydraulic reservoir	7.2 gal	27.2 L
Total hydraulic system volume	8.5 gal	32.2 L



## BRAKING SYSTEM

Ground drive brakes machine hydraulically when moved to neutral position

## BATTERY

U1 SAE reserve capacity rating	32 min
SAE cold crank rating @ 0°F (-18°C)	200 amps

# ZAHN® 1CM COMPATIBLE REPLACEMENT MIXERS



## ZAHN®\* 1CM COMPATIBLE REPLACEMENT MIXERS / TUB ASSEMBLY

Our grout tub has steel twice as thick as other brands AND our mixer blades do not contact or wipe against the tub. This provides for virtually NO WEAR. Our design works so well that we offer a LIFETIME GUARANTEE against tub wear caused leakage, as well as against seal and motor failure. Our motor is outside the tub where the grout cannot get to it. Easy to get to key/keyway too in the event an operator tries to start the mixer after loading. (Always start mixers before loading the mix).

SPECIFICATIONS	U.S.	METRIC
Size	53"x42"x50"	1346.2x1066.8x1270 mm
Weight	900LBS	408.23 kg

# CD100



## CD100 CORE DRILL ATTACHMENT

Reduce job time with efficient drilling performance! Skid steer core drills offer unmatched power for your core drilling needs. Built for durability and precision, these drills feature adjustable depth control and rugged construction, making them ideal for all of your projects. Designed for maximum efficiency and reliability, they help ensure your projects are completed accurately and on schedule. Our core drill attachment for mini skid steers has been designed for optimal performance with the SK600, but can be configured to fit nearly any skid steer, contact us for a quote.

**Available as an attachment only or as a package with a used SK600. In stock for immediate purchase.**

## EFFICIENT, PRECISE, DRILLING

CD100 skid steer core drill systems feature a powerful hydraulic motor, enabling fast and precise drilling through concrete, asphalt, and masonry. They can accommodate various hole depths and core bit sizes, with the quick change bits allowing you to select the perfect combination for your project needs.



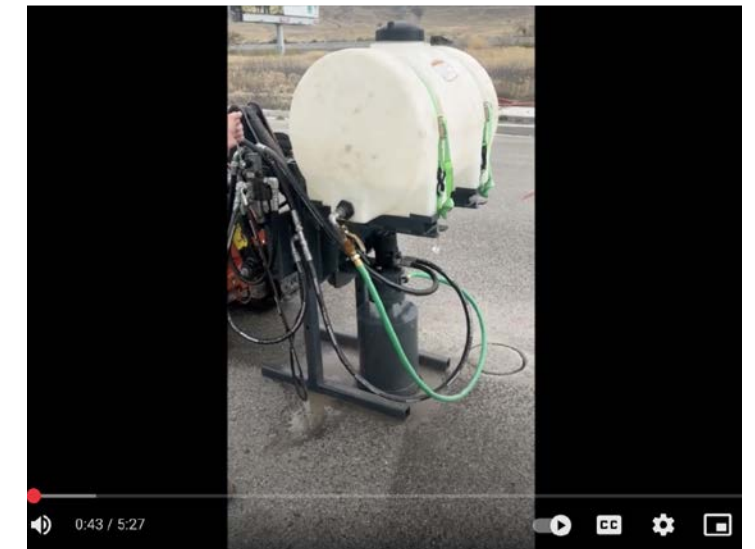
## SIMPLE AND LOW COST SOLUTION

CD100 skid steer core drill systems offer great value without compromising on quality. With a self-sufficient operation requiring no additional power supply, they provide both convenience and efficiency. The integrated water system includes a 35-gallon polyethylene reservoir with a gravity-fed design, eliminating the need for a problematic 12V DC pump. Designed for fast cutting, low maintenance, and durability, they deliver reliable performance you can depend on.



SPECIFICATIONS	U.S.	METRIC
Size	28"x36"x58	71.12x91.44x147.32 mm
Weight	300lbs	136 kg
Water Tank Capacity	35Gal	132L
Hydraulic pressures and flows	12GPM 3000PSI	45.4L/min 207Bar
RPM at max flow	250	
Hydraulic connectors		

- **Low Cost** – Get a powerful, high-quality system at a competitive price, offering exceptional value without compromising performance.
- **Simple & Easy to Use** – Designed for straightforward operation, reducing setup time and maximizing productivity.
- **No Water Pumps Needed** – The gravity-fed water system eliminates the need for unreliable 12V DC pumps, reducing maintenance and system failures.
- **Quick Change Core Bits** – Swap out core bits fast and effortlessly, keeping downtime to a minimum and boosting efficiency. It can also be adapted to Utilicor style core bits
- **Fast Cutting** – High-power hydraulic core drill systems cut through concrete, asphalt, and rock quickly and cleanly for maximum productivity.
- **Low Maintenance** – Built with hard-wearing components for long service life and minimal upkeep, even in demanding conditions.
- **Precision Drilling** – Ensure accurate hole positioning and easy drill alignment, delivering professional results every time.



Watch our beta design unit in action on our **Youtube channel**

**Core Drill Attachments start from \$7,995**  
**Packages including a used SK600**  
**Combo start from only \$26,000,**  
**units in stock now!**  
**Contact us for more information**

# TRACTOR PACKAGE



## FULLY LOADED PACKAGE - WE SOURCE LOW HOUR VERMEERS TO GET YOU UP AND RUNNING QUICKLY

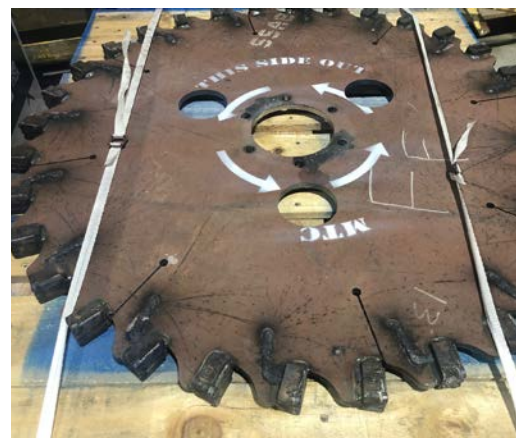
SAW 16F attached to a low hour Vermeer RTX550. The price is variable depending on the base price of the used machine. A clean RTX550 with less than 1000 hours mated with a new SAW 16F microtrench saw is \$120k. Lead time is approximately 2-3 weeks, but may be less. Quoted price does not include shipping.

### Full Saw Attachment Saw16-F

This 16" deep cut saw attachment will adapt to almost any hydrostatic tractor such as the Vermeer RTX550 or Ditch Witch® RT80. This attachment has side shift, plunge cut. 4" or 6" vacuum transitions. 30-40 GPM attachment flow is recommended.

### Blades

AR (Abrasion Resistant) Plate is used for all components, it is twice the strength of the steel used by our competitors. Our blades cut faster and cleaner than others on the market and last longer as well.



\* The Charles Machine Works, Inc

## OUR RECOMMENDED TRACTOR - VERMEER RTX550

Experience dependable performance and versatility with the **RXT550**, a low hour, pre serviced, pre inspected used machine built to deliver results day after day. Designed for reliability and ease of operation, the RXT550 combines efficient power with a durable build, making it ideal for both demanding tasks and everyday use. With its proven track record and excellent maintenance history, this model offers exceptional value for anyone seeking performance without compromise. Get the strength, stability, and confidence you need—at a fraction of the cost of new.



### GENERAL DIMENSIONS AND WEIGHTS

Weight (basic tractor, rubber tires): 5600 lbs (2540.1 kg)  
 Length (basic tractor, rubber tires): 10.3 " (26.2 cm)  
 Width (basic tractor, rubber tires): 72.4 " (183.9 cm)  
 Height (basic tractor, rubber tires): 96.8 " (245.9 cm)

### ENGINE DETAILS

Make and Model: Cummins B3.3  
 Manufacturer's gross hp rating: 65 hp (48.5 kw)  
 Maximum Torque: 158 ft-lb (214.2 Nm)  
 Number of Cylinders: 4  
 Cooling Medium: Liquid  
 Maximum Operating Angle (Fore/Aft)\*: 35 deg  
 Maximum Operating Angle (Left/Right)\*: 35 deg  
 Fuel Type: Diesel  
 Emissions rating: Tier 4i (El Stage IIIA)  
 Guaranteed sound power (CE-rating): 108 dB(A)  
 Noise Level at Operator's Ear: 90 dB(A)

### CAPACITIES

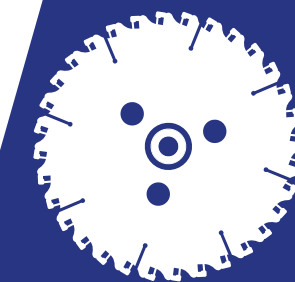
Fuel Tank: 27 gal (102.2 L)  
 Hydraulic Tank: 18 gal (68.1 L)  
 Hydraulic System: 20 gal (75.7 L)  
 Coolant: 3 gal (11.4 L)

### HYDRAULIC SYSTEM

Ground drive pump capacity: 31 gpm (117.3 L/min)  
 Ground drive pump relief: 4350 psi (299.9 bar)  
 Attachment pump capacity: 31 gpm (117.3 L/min)  
 Attachment pump relief: 5080 psi (350.3 bar)  
 Auxiliary pump capacity: 11.6 gpm (43.9 L/min)  
 Auxiliary pump relief: 2500 psi (172.4 bar)

### SAW16

Specifications  
 Weight: 560 lbs (254 kg)  
 Length: 102 " (259.08 cm)  
 Wheel Diameter: 43.1" (109.5 cm)  
 Minimum Cutting Width: .750" (1.9 cm)  
 Maximum Cutting Width: 2.50" (6.35 cm)  
 Maximum Cutting Depth: 16" (40.6 cm)



Interested in our other Saws? Have a look at our comparison table on page 14

# SAW COMPARISONS



Saw Type	Trench depth	Trench width	Side Discharge Compatible	Speed Conversion Kit for	Length, transport 10ft tractor plus saw	Attachment height, transport	Attachment width, transport	Attachment weight (lb)
<b>SAW16-F</b> The complete 16" trenching solution - purpose-built and turn-key ready.	0-16"	.5-2.5"	✓		120" saw/traverse	67"	68.6"	1600
<b>SAW16-D</b> A depth conversion kit for the Ditch Witch® MT12. It reuses most of the mount to save you money while you get a deeper cut.	0-16"	.5-2.5"	✓	Ditch Witch® MT12	120" saw/traverse	67"	68.6"	850
<b>SAW16-V</b> Adapter kit designed for MTR16 Vermeer microtrench saws. Keeps much of your existing hydraulic/structural components.	0-16"	.5-2.5"	✓	Vermeer MTR16	120" saw/traverse	67"	68.6"	1500
<b>SAW16-SS</b> Our microtrenching saw designed for skid steer platforms	0-16"	.5-2.5"	✓		64" saw/traverse	67"	46"	850
<b>SAW16-SC</b> A specialized side mount skid steer microtrenching attachment. It allows curb to curb cutting.	0-16"	.5-2.5"	✓		89" saw/traverse	67"	80"	1500
<b>SAW21-F</b> The complete 21" trenching solution - purpose-built and turn-key ready.	0-21"	.5-3.25"			132" saw/traverse	72"	72"	2100
<b>SAW26-F</b> The complete 26" trenching solution - purpose-built and turn-key ready.	0-26"	.5-3.25"			144" saw/traverse	75"	88"	2600



## TEETH

Our patent pending Enduro Teeth (aka "Cobble Busters") provide options for cutting different types of roads. Enduro Teeth last up to seven times longer than regular teeth and are ideal for severe rock conditions. They also hold up well when cutting concrete.

Both teeth types (Enduro and Regular) are compatible with all of our saws.



## BLADES

Our Blades are made using very hard AR (Abrasion Resistant) heat treated tool steel grade plate, making them cut faster, cleaner, and last much longer than competitors. Customizable to any saw, they are the premium choice over all other blades and at a lower cost too. Performance leader, durability leader and value leader. A true hat trick!

# SAW16-F



## FULL SAW ATTACHMENT SAW16 - F

The complete 16" trenching solution - purpose-built and turn-key ready.

SAW16-F is our full microtrenching saw attachment. It is designed to be adaptable to a wide range of tractors (e.g. Ditch Witch®\* RT80, Vermeer RTX550, RTX750, RTX1250 ).

### FEATURES

- Complete attachment – includes mounting frame, hydraulic drive, actuator systems
- Universal compatibility (via adapters) - you can mount on virtually any tractor platforms
- 16" depth (with adjustable depth control)
- Built for microtrenching: narrow cuts, tight tolerances, clean spoild handling
- Heavy-duty materials and construction (machined interfaces, robust welds)
- Proven in field with existing installations

### BENEFITS

- Turnkey solution - you get everything needed to make your tractor a microtrenching machine at a low cost.
- Flexible deployment across your fleet (with adapter kits)
- Optimized for trenching depth, speed, and durability
- Ideal for customers wanting a "plug-and-go" high performance setup

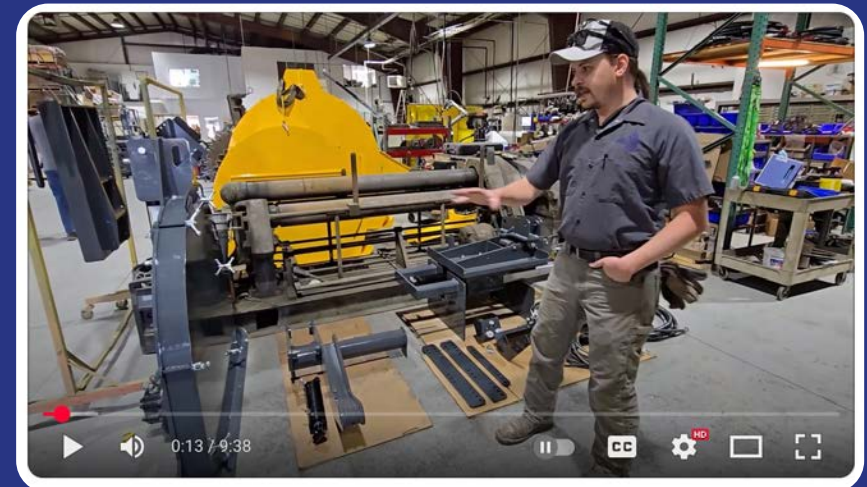


### SPECIFICATIONS

	U.S.	METRIC
Trench depth	0-16"	0-533.4 mm
Blade diameter		
Attachment height, transport	67"	1701.8 mm
Length, transport		
10ft total tractor plus saw	120" saw/traverse	3048 mm saw/traverse
Trench width	.5-2.5"	12.7-63.5 mm
Width, transport	68.6"	1742.44 mm
Attachment weight	1600 lb	725.75 kg



Watch an install in action on our **Youtube channel**



\* Registered trademark of The Charles Machine Works, Inc

# SAW 16-D

Ditch Witch®\* MT12 to 16" deep conversion



## MT12 DEPTH CONVERSION - DITCH WITCH®\* MT12 TO 16" CUT

**A smarter upgrade for serious trenching crews.**

The Saw 16-D is McCown Technology's next-generation microtrenching saw, engineered to replace your MT12 and give you the extra depth you need for today's tougher fiber jobs - without changing your full setup.

The SAW 16-D is designed to reuse most of your existing MT12 Saw which saves considerable money. This kit converts a Ditch Witch®\* MT12 to our SAW16 which is similar to the Ditch Witch®\* MT16. Same blade, same depth of cut. But with increased airflow and an AR skid plate it will cut faster and last longer than an MT16.

\*Ditch Witch®\* is a registered trademark of the Charles Machine Works, Inc. MTC products are aftermarket products that are compatible with Ditch Witch®\* products.

### FEATURES

- Deeper Cutting Depth - Handle bigger jobs and meet evolving install standards
- Minimal Attachment Changes - No need for a full reconfiguration
- Lower Upgrade Cost - A smart step forward without breaking the budget
- Built for Performance - Engineered for durability, power, and clean cuts
- Fast Integration - Get back to cutting with minimal downtime
- Contact us to get specs, pricing, or to see it in action.
- Let the Saw 16-D put your crew ahead of the curve.

**Have a Vermeer RTX550?  
See our SAW 16-V on page 20**

### SPECIFICATIONS

	U.S.	METRIC
Trench depth	0-16"	0-533.4 mm
Blade diameter	44 "	1117.6 mm
Attachment height, transport	67"	1701.8 mm
Length, transport		
10ft total tractor plus saw	120" saw/traverse	3048 mm saw/traverse
Trench width	.5-2.5"	12.7-63.5 mm
Width, transport	68.6"	1742.44 mm
Attachment weight	850 lb	385.55 kg



# SAW16-V



**Already have a Vermeer RTX550? This conversion kit will work with your current mount and motor**

## SPEED CONVERSION - VERMEER MTR16

**Double your cutting speed on Vermeer tractors — no major hardware overhaul.**

SAW16-V is a speed conversion kit compatible with Vermeer tractors (e.g. RTX550) that upgrades your unit to the MTC high performance 16" cutting depth saw housing while retaining much of your existing mounting hardware. It allows contractors using Vermeer MTR16 platforms to achieve microtrench high production rates with minimal capital outlay.

### FEATURES

- Adapter kit designed for MTR16 Vermeer microtrench saws. Keeps much of your existing hydraulic/structural components
- High-speed cutting due to a superior saw design and optimized airflow.
- Uses the same blades as your MTR16. Durable construction, designed for long life
- Cost-effective route to drastically improve production for Vermeer owners
- Faster deployment



### SPECIFICATIONS

	U.S.	METRIC
Trench depth	0-16"	0-533.4 mm
Blade diameter	44"	1117.6 mm
Attachment height, transport	67"	1701.8 mm
Length, transport		
10ft total tractor plus saw	120" saw/traverse	3048 mm saw/traverse
Trench width	.5-2.5"	12.7-63.5 mm
Width, transport	68.6"	1742.44 mm
Attachment weight	1500 lb	680.39 kg



**Have a Ditch Witch®\* MT12? See our SAW 16-D on page 18**

# SAW16-SC



## SIDE-CUT 16" MICROTRENCH SAW (SIDE CUTTER)

**Cut laterally,— side-cutting for precision curb to curb trenching in one pass**

SAW16-SC is a specialized side mount skid steer microtrenching attachment. It allows curb to curb cutting in one pass. No turning around or disconnecting vacuum hoses.

### FEATURES

- 16" cutting depth
- Controlled side discharge option is available
- Compatible with your existing SAW16 blade systems

### BENEFITS

- Ideal for short lateral curb to curb jobs.
- Greater speed in completing lateral cuts
- Helps preserve road edges or boundaries when doing lateral cuts
- Adds a powerful option to your microtrenching portfolio

### SPECIFICATIONS

	U.S.	METRIC
Trench depth	0-16"	0-533.4 mm
Blade diameter	44 "	1117.6 mm
Attachment height, transport	67"	1701.8 mm
Length, transport		
10ft total tractor plus saw	89"	2260.6 mm
Trench width	.5-2.5"	12.7-63.5 mm
Width, transport	80"	2032 mm
Attachment weight	1500 lb	680.39 kg

# SAW16-SS



## SKID STEER MICROTRENCH ATTACHMENT

**Take microtrenching where bigger machines can't go - skid steer compatible 16" saw.**

The SAW16-SS is our microtrenching saw designed for skid steer platforms, bringing 16" trench depth to compact, versatile machines. Perfect for tight urban jobs, confined spaces, or deploying microtrenching from compact loader units.

### FEATURES

- Full size skid steer compatible interface (High Flow 30 gpm or more is highly recommended)
- 16" trenching depth
- Reinforced frame and drive system in compact envelope
- Compatible with same blade tooling system as the rest of your SAW16 family
- Easy hydraulic hook-up, accessible service points

### BENEFITS

- Unlock microtrenching for small, nimble machines
- Access tight work zones (alleys, sidewalks, urban corridors)
- Lower transport and mobilization costs
- Ideal for contractors wanting to add microtrenching ability to existing skid steer fleets

### SPECIFICATIONS

	U.S.	METRIC
Trench depth	0-16"	0-533.4 mm
Blade diameter	44 "	1117.6 mm
Attachment height, transport	67"	1701.8 mm
Length, transport		
10ft total tractor plus saw	64"	1625.6 mm
Trench width	.5-2.5"	12.7-63.5 mm
Width, transport	46"	1168.4 mm
Attachment weight	850 lb	385.55 kg

# SAW16-SD



## SIDE DISCHARGE ADD-ON (SIDE DISCHARGE MODULE)

**Option for any SAW16 into a highly efficient street side-discharge cutter instead of vacuum extraction.**

SAW16-SD is an add-on option module you can install on SAW16 units (D, F, V, SS) to switch from vacuum extraction to side discharge. It's ideal in environments where vacuum spoil removal is less practical or too expensive or where you want direct spoil ejection to the street side rather than the gutter.

### FEATURES

- Module integrates with SAW16 models to reroute spoils to the street side
- High performance patent pending dirt deflection system that tracks the position of the blade edge to capture virtually all of the spoils
- Maintains compatibility with existing hydraulic and structural systems

### BENEFITS

- Gives you the flexibility of spoil management strategy (vacuum vs side discharge)
- Avoids the cost of purchasing a vacuum excavator



- Useful in soils or environments where vacuum systems struggle
- Broadens your deployment options for different jobsite constraints

## SPECIFICATIONS

Added width to any SAW16 the SD is installed on

## U.S.

10"

## METRIC

254 mm



Watch a demonstration video on our **Youtube channel**



# SAW21-F



## FULL-ATTACHMENT 21" MICROTRENCH SAW

**Go deeper - the full-attachment option for 21" trench depths.**

SAW21-F is the 21" full attachment in your lineup. It's designed for contractors who need more depth capacity while retaining the same high quality modularity and flexibility as the SAW16 series.

### FEATURES

- 21" nominal trench depth capability
- Full attachment (mounting, drives, hydraulics)
- Adaptable to tractor platforms via modular interfaces
- Reinforced structure to handle deeper cuts and increased stresses

### BENEFITS

- Build projects demanding deeper trenching (e.g. certain conduit, drainage, or utility installations)
- Same support / parts ecosystem as your SAW16, easing logistics
- More cutting range with proven reliability
- Ideal for broadening your contract capability

Some projects require depths greater than 16". Until now that required a beast of a 26" deep cutting saw. Now you can hit those 18" and 20" deep projects with a smaller saw that uses lower cost blades than a 26" saw. In addition, this is the widest cutting microtrench saw on the market. With the SAW21 you can access projects capable of handling installations of up to 2-1/2" SDR11 conduit.

### SPECIFICATIONS

	U.S.	METRIC
Trench depth	0-21"	0-533.4 mm
Blade diameter	54"	1371.6 mm
Attachment height, transport	72"	1828.8 mm
Length, transport		
10ft total tractor plus saw	132" saw/traverse	3352.8 mm saw/traverse
Trench width	.5-3.5"	12.7-82.55 mm
Width, transport	72"	1828.8 mm
Attachment weight	2100 lb	952.55 kg



# SAW26-F



## FULL-ATTACHMENT 26" MICROTRENCH SAW

**Push the limits — a 26" full-depth trenching solution in your fleet.**

SAW26-F is a purpose-built, heavy duty full saw attachment engineered for deep trenching up to 26". It's meant for large scale jobs requiring exceptional depth performance without sacrificing modularity or reliability.

### FEATURES

- 26" trenching depth
- Robust frame and reinforced components to handle elevated loads
- Full attachment includes mounting, structural, hydraulic, and drive systems

Compatibility via adapter kits for major tractor platforms

- Designed with maintenance in mind (accessibility, service points)

### BENEFITS

- Enables deeper utility installations in one pass
- Keeps you competitive on jobs requiring deeper trenches
- Maintains your standard parts and service philosophy across product line
- Attracts higher-value contracts requiring specialized capability



### SPECIFICATIONS

	U.S.	METRIC
Trench depth	0-26"	0-660.4 mm
Blade diameter	64"	1625.6 mm
Attachment height, transport	75"	1905 mm
Length, transport		
10ft total tractor plus saw	144" saw/traverse	3657.6 mm saw/traverse
Trench width	.5-3.5"	12.7-82.55 mm
Width, transport	88"	2235.2 mm
Attachment weight	2600 lb	1179.34 kg



# VACUUM TRANSITION SYSTEM



## DESIGNED FOR PERFORMANCE AND ENDURANCE

Optimized for the SAW16 Microtrenching Saw (compatible with DW MT16\* too)

At MTC, we're always refining the details that drive better performance in the field.

Our Vacuum Transition System for the SAW16 ( MT16\* compatible) saw delivers smoother airflow, reduced restriction, and increased durability — helping you trench cleaner, faster, and more efficiently.

### FEATURES

- Direct Replacement Design - Weld-on base plate with bolt-on housing for quick installation.
- Optimized Airflow Geometry - Larger flow area reduces resistance and improves debris extraction.
- Replaceable Wear Plate - Hardened steel insert protects the interior from abrasive material impact.
- Service-Friendly Access - Inspection port allows operators to monitor wear and replace parts easily.
- Durable Construction - Built from heavy-duty materials for high performance and long-term reliability.

\*DW, Ditch Witch® and MT16 all refer to products manufactured by The Charles Machine Works, Inc. The MTC products are after market non DW products.



## BENEFITS

- Improved suction performance - More efficient trench cleaning.
- Improved cutting speed due to increased CFM - Cutting speed is proportional to CFM.
- Reduced clogging - Smooth internal design improves flow.
- Lower maintenance cost - Replace only the wear component, not the entire housing.
- Increased uptime - Faster service intervals and extended equipment lifespan.

## TECHNICAL INSIGHT

The MTC Transition maintains a area rule design matched flow area through its length, increasing from 17.24 to 23 in<sup>2</sup> — ensuring consistent air velocity gradient and preventing the pressure drop common with smaller factory fittings.

An internal replaceable wear insert absorbs the abrasive blast of trench debris, preventing housing erosion. With regular visual checks, this system is built to last the life of your saw.

## THE DIFFERENCE IS FLOW

Where factory transitions choke performance, MTC's open-flow design delivers efficiency and power. The result: smoother airflow, cleaner trenches, faster cutting and fewer interruptions.

Upgrade your MT16 with MTC's precision-built Transition System - designed and manufactured in the USA for professionals who expect the best.

## SPECIFICATIONS

Discharge port

### U.S.

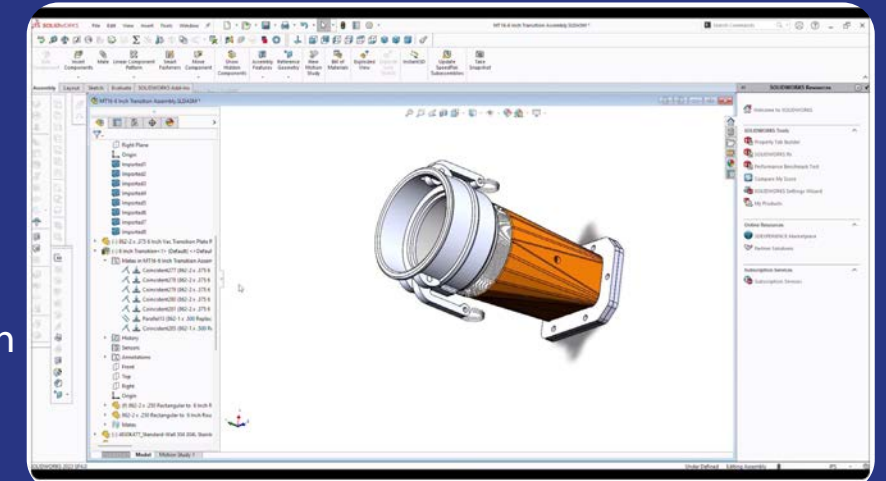
6" CamLock

### METRIC

152.4 mm CamLock



Watch a demonstration video on our **Youtube channel**



## READY TO UPGRADE?

MTC can ship these transition systems directly to your team. Each design is precision-built, field-tested, and engineered to last.

**Contact us today to learn how the MTC Transition System can improve your microtrenching performance.**

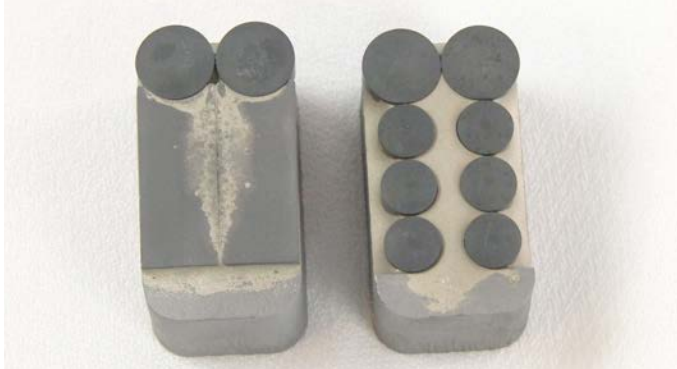
# TEETH

## CUTTING TEETH BUILT FOR REAL-WORLD MICROTRENCHING

In microtrenching, performance starts with tooth design. At MTC, every tooth is engineered for faster penetration, cleaner edges, and maximum life in tough cutting environments. Whether your crew is cutting pristine asphalt or unpredictable cobble, our teeth deliver consistent results that keep projects moving and machines earning.

## ENDURO TEETH – ENGINEERED FOR EXTREME CONDITIONS

Our patent-pending Enduro Teeth are built for severe rock, cobble, and concrete-heavy surfaces, offering up to seven times the life of standard teeth—an enormous advantage where downtime is costly. Reinforced geometry and upgraded wear surfaces keep them sharp longer, cutting straighter and maintaining production speeds throughout their service life. Ideal for contractors needing maximum durability without compromising cut quality.



## SPEED TEETH – FAST, CLEAN, PRECISE

When efficiency is the priority, Speed Teeth excel. Optimized for everyday asphalt, they deliver fast, smooth cuts and crisp trench walls. Their streamlined profile clears material efficiently and reduces load on the saw, helping machines run cooler and extending blade life. Perfect for long-distance fiber routes where speed and finish quality matter.

## BUILT TO A HIGHER STANDARD

All MTC teeth are crafted with the same engineering principles that define our blade systems.

# HUB ADAPTER

## CROSS-COMPATIBILITY MADE EASY

Expand your fleet's flexibility with the MTC Hub Adapter, engineered to let Vermeer microtrench saws run MTC or Ditch Witch®-style blades without replacing major components. This precision-machined adapter instantly makes your existing equipment more versatile - and more valuable.

## ONE ADAPTER, MULTIPLE SAW FAMILIES

The adapter bridges mounting differences between platforms, allowing contractors to switch between saw types with ease. Whether upgrading tooling, standardizing blade inventory, or moving crews between machines, it keeps everything compatible.

## BUILT FOR HEAVY-DUTY TRENCHING

Constructed from thick, high-strength steel, the adapter is designed to withstand the torque and vibration of deep microtrenching.

## FEATURES INCLUDE:

- Reinforced mounting studs for secure attachment
- Precision-machined surfaces for perfect alignment
- Corrosion-resistant hardware for long-term reliability
- Direct bolt-on installation with no modifications required
- Reduce Inventory. Increase Capability.



With one hub adapter, your Vermeer platform can run:

- MTC blades
- Ditch Witch®-compatible blades
- Custom-width MTC blades

This eliminates the need for dedicated blade sets and streamlines fleet management.

\* Registered trademark of The Charles Machine Works, Inc

# CORE BITS



## BUILT FOR POWER, PRECISION & LONG LIFE

Our core bits are engineered for contractors who demand dependable performance in tough surfaces like asphalt, concrete, and mixed utility corridors. Every unit is built with a rugged steel barrel and a high-performance crown designed to cut cleanly, track straight, and deliver maximum service life. The lineup shown demonstrates the range of configurations we produce - from heavy-duty bolt-on systems to fast-change screw-on styles.

## THE MTC CROWN — DESIGNED FOR REAL CUTTING CONDITIONS

At the heart of every core bit is a crown built to handle the forces of high-speed coring. Our crowns feature:

- Optimized tooth geometry for smooth, efficient entry
- Engineered gullet spacing to clear debris and reduce binding
- Heat-treated materials for stability under impact and heat
- Precision-machined fit surfaces for perfect alignment
- Each crown is developed through extensive field testing to ensure consistent cutting speed and durability in real jobsite environments.



## BUILT FOR CONTRACTORS WHO CUT EVERY DAY

Whether you prefer a bolt-on, screw-on, or fabricator-friendly crown-only setup, each style is manufactured to the same high standard:

- Thick-wall barrels to resist flex and ovaling
- True-running assemblies that stay centered and reduce operator strain
- Service-friendly construction for easy maintenance or rebuilds
- Compatibility with a wide range of skid steers and drilling platforms
- You get the confidence to tackle demanding cuts with equipment built to last.

## RELIABLE PERFORMANCE FROM FIRST CUT TO LAST

MTC core bits are engineered for crews who work fast and expect their tooling to keep up. With a balanced design that reduces vibration and maintains cutting accuracy, these bits help deliver cleaner holes, fewer stalls, and longer intervals between service.



## WE ARE A 5<sup>TH</sup> GENERATION METAL FABRICATION COMPANY

Established in 1865. Around the time of the civil war, Adam Clark McCown, a blacksmith – traveled from Virginia to Oregon. His son, James McCown, picked up the trade and continued with it in Tygh Valley, Oregon. His son, Verl McCown, integrated the family blacksmith operation and metal fabrication business with a family farm and ranch. His son, Chuck McCown, ran away (screaming) from the farm and ranch as soon as he possibly could to get away from truly hard work.

Chuck studied CNC machining at a community college, obtained his welding training from the Steamfitters Union. He obtained a formal education in Electrical Engineering from BYU and later a degree in business/management from HLG University. Chuck has been involved in some form of manufacturing his whole life.

His sons Frank, Bill and Ben as well as daughters Lorri and Lucy are currently involved in the business as 5th generation metal workers, focusing on CNC/CAM work, robotic manufacturing with degrees in electrical engineering and computer science. However, manager Jenny McCown truly runs the show.

We're proud to now serve corporate, municipal, and private clients in our 22,400 square foot facility located in Lake Point, Utah. Our other divisions manufacture circuit boards and other electronic devices focusing on surge suppression for data networking. We also own and operate a fiber optic internet service provider serving portions of North Tooele Valley. You will find us running under several flags, McCown Technology Corporation, Terabit Networks and Microtrench.Pro



## MTC New Customer On-boarding Welcome!

We are happy you are choosing us for all your micro trenching needs. In order for us to ensure accuracy with every order please fill out this form on our website using the QR code.

**We will require a PO number from you in order to move forward to the next step in production.**

Please note, we automatically add all customers to our email and text marketing message list.

If you do not want messages from us please let us know.





microtrench-blades.com • info@go-mtc.com • 801-250-9503  
8401 N Commerce Drive, Lake Point, Utah 84074